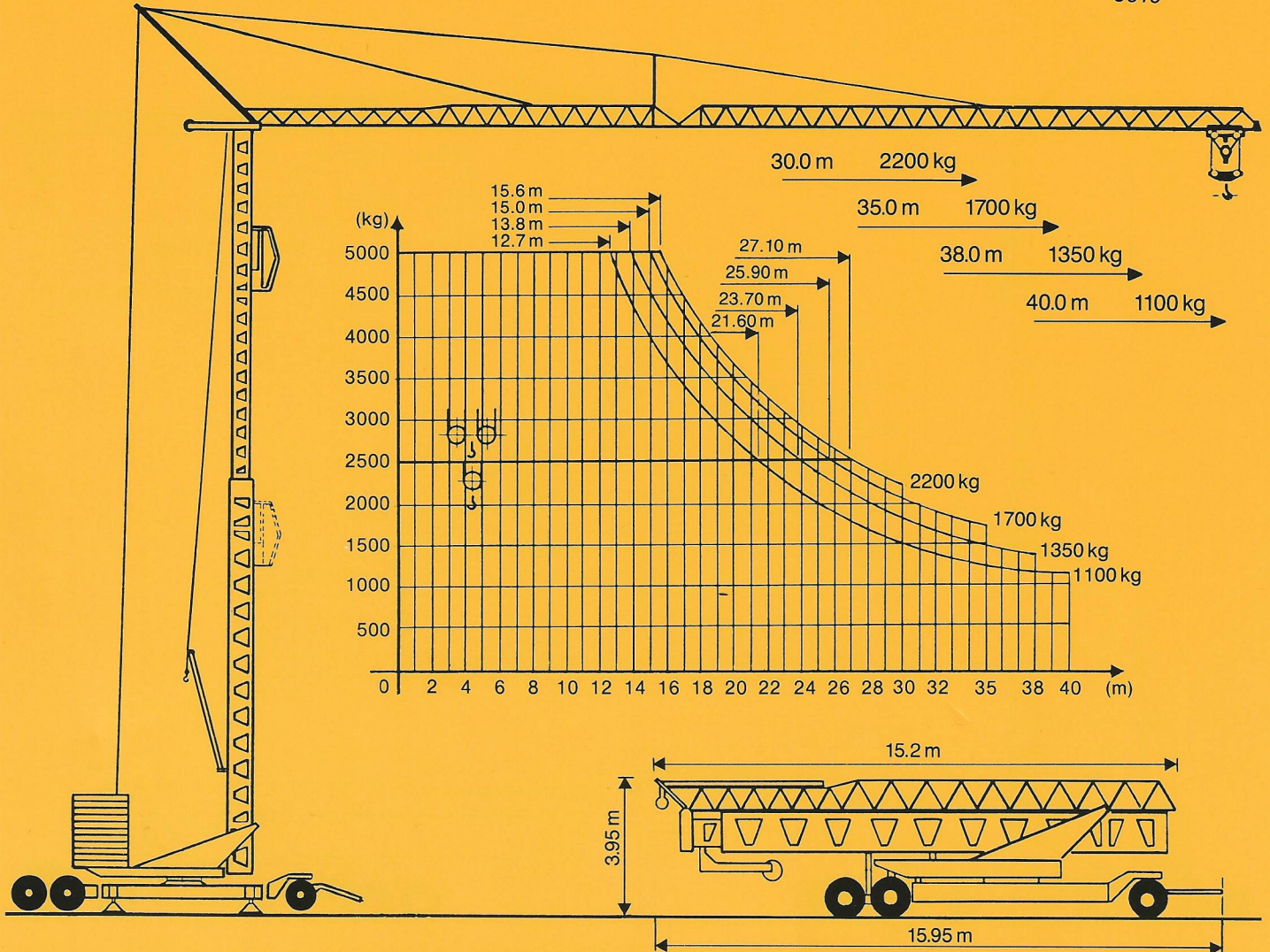


Conducta EURO-Kran E 4011/25

ZUTK
Nr.
5910



Tragkraft Ausladung	kg	5000	2500	2200	1700	1350	1100		
30 m	m	15.6	27.1	30.0				Hakenhöhe hauteur s/crochet altezza gancio height of hook	20/24.5 m
35 m	m	15.0	25.9		35.0			Spurweite ecartement de voie scartamento wheel gauge (track)	4.5 m
38 m	m	13.8	23.7			38.0		Radstand empattement carreggiata wheel base	4.5 m
40 m	m	12.7	21.6				40.0		
	v =	50 m/min		2000 kg		Drehradius rayon de giration arrière raggio rotazione rotating radius		3.25–3.46 m	
		25 m/min		2500 kg		Konstruktionsgewicht poids de la grue peso della gru structural weight			21.5 t
	v =	12.5 m/min		4000 kg		Gegenballast contre poids zavorra contrappeso counterweight		34.0–32.0 t	
		3 m/min		5000 kg		Eckdruck/Raddruck pression d'angle/charge par roue pressione su uno stabilizzatore corner pressure/wheel pressure			30.4 t–30.0 t
	n =	0.2/0.6/1.0 U/min		Gesamt-Motorenleistung puissance totale des moteurs forza motrice totale total motor output		26 kW			
	v =	20 m/min		Kabelquerschnitt section du cable sezione del cavo sottogomma cable section		4 × 16 □			