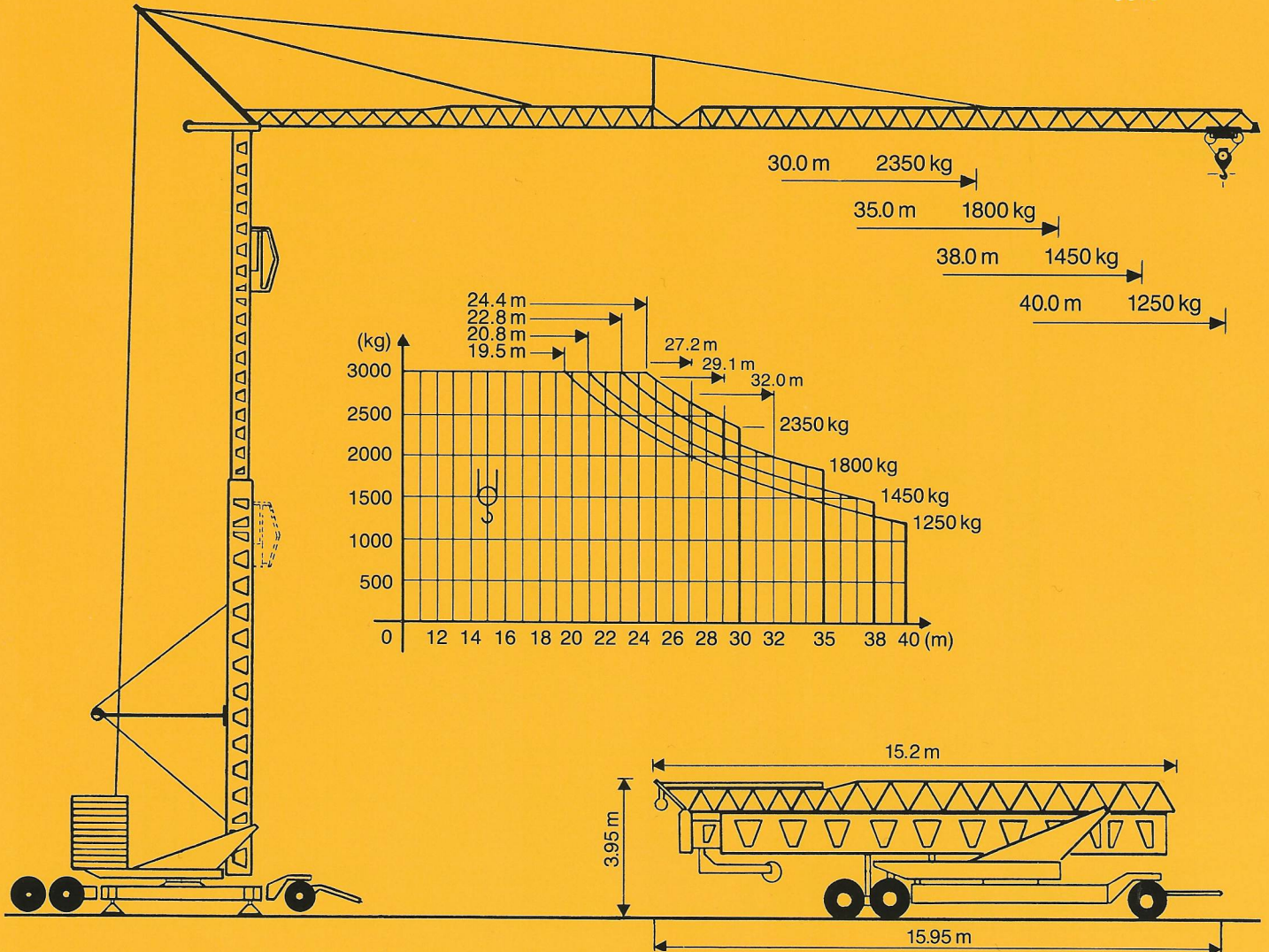


Conducta EURO-Kran E 4013/25

ZUTK
Nr.
5910



Tragkraft Ausladung	kg	3000	2350	2000	1800	1450	1250		
▲▲▲ 30 m	m	24.4	30.0					Hakenhöhe hauteur s/crochet altezza gancio height of hook	20/24.5 m
▲▲▲▲ 35 m	m	22.8		32.0	35.0			Spurweite ecartement de voie scartamento wheel gauge (track)	4.5 m
▲▲▲▲▲ 38 m	m	20.8		29.1		38.0		Radstand empattement carreggiata wheel base	4.5 m
▲▲▲▲▲▲ 40 m	m	19.5		27.2			40.0		
		v = 50 m/min		2000 kg				Drehradius rayon de giration arrière raggio rotazione rotating radius	3.25–3.46 m
		v = 25 m/min		3000 kg				Konstruktionsgewicht poids de la grue peso della gru structural weight	21.5 t
		v = 6 m/min		3000 kg				Gegenballast contre poids zavorra contrappeso counterweight	34.0–28.0 t
		v = 25/50 m/min						Eckdruck/Raddruck pression d'angle/charge par roue pressione su uno stabilizzatore corner pressure/wheel pressure	30.4–30.0 t
		n = 0.2/0.6/1.0 U/min stufenlose, progressive Steuerung						Gesamt-Motorenleistung puissance totale des moteurs forza motrice totale total motor output	26 kW
		v = 20 m/min						Kabelquerschnitt section du cable sezione del cavo sottogomma cable section	4x16 □